

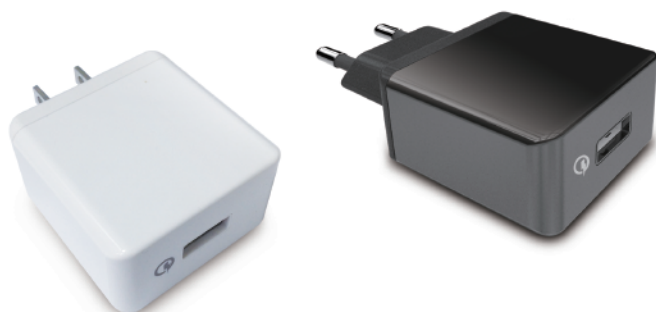


PHIHONG

18W Quick Charge 3.0 Adapter

The Quick Charge 3.0 (QC 3.0) 18W adapter is the latest offering from a world leader of charging adapters- Phihong Technology. With more than 45 years professional experiences in power supply design and manufacturing, Phihong constantly creates innovative products and at the same time insists on quality and safety.

Phihong Quick Charge 3.0 (QC 3.0) adapters are tested and certified to Quick Charge 3.0 (QC 3.0) standard. This new product supports automatic sensing and switching between 3.6V-6V in constant current mode and between 6.2V-12V in constant power mode. It can power QC 3.0-enabled devices efficiently and to charge 4 times faster than conventional chargers. Additionally, Phihong QC 3.0 adapters meet DoE level VI and CoC V5 Tier 2 high-efficiency standards and certified to UL, CB and CE safety specifications.



Quick Charge 3.0



Protections

- Over voltage protection (OVP)
- Over current protection (OCP)
- Short circuit protection (SCP)

Features

- Quick Charge 3.0 Certified (pending)
- Automatic sensing and switching between 3.6V-6V in constant current mode and between 6.2V-12V in constant power mode
- More granular range of voltages: 200mV increments, from 3.6V to 12V
- High Efficiency, meet DoE level VI and CoC V5 tier 2
- Wide input range (90 ~ 264Vac Max)
- Default 5V/3A DC output for non-QC 3.0 enabled devices
- Backward-compatible with Quick Charge 1.0 and Quick Charge 2.0 devices
- Output with USB Standard-A receptacle
- Plug types available for US, EU, UK and Korea
- UL, CB, CE approved (pending)
- 49g light weight and easy for travel
- Case color : black or white

Specification

Model Name		AQ18x-308A-H, AQ18x-308AW-H	
AC input range	100~240Vac (90~264Vac min/max)	Protection	OVP, OCP, SCP
AC input frequency	50/60Hz Nom (47~63Hz min/max)	Operating temperature	-5°C ~ +45°C
Output voltage	3.6V-6V constant current mode (3A max);	Safety	UL, CB, CE
	6.2V-12V constant power mode (18W max)	EMI	FCC Class B, EN55022 Class B
Output current	0~3A	Dimension	45 x 27 x 45 mm
Output power	18W max	Weight	49g
Power saving	<75mW @ 115Vac/230Vac	Plug Type	x=A (US), E (EU), K (UK), H (Korea)
Ripple	180mVpk-pk	Case color	Black, W=white.

BA06 PHT160411



PHIHONG TECHNOLOGY CO., LTD.

- +886-3-3277288
- www.phihong.com.tw
- phsales@phihong.com.tw